

*The Clayton County*  
Youth Services Partnership Presents

# Building Resilient Youth A Multi-Disciplinary Approach

Sponsored By

Morehouse School of Medicine – Community Health & Preventive Medicine (CH/PM) –  
Health Promotion Resource Center (HPRC)



Funded By

US Department of Justice  
Office of Juvenile Justice & Delinquency Prevention (OJJDP)  
Office of Justice Programs (OJP)



# Program Partners

- *The* Advocacy Foundation/ CCYSP
- DADS, Inc.
- Clayton County Parks & Recreation Dept.
- Clayton County Juvenile Court
- Clayton County Sheriff's Office
- Clayton County Police Dept
- Lion of Judah Community Development Center
- The Metropolitan Atlanta Violence Prevention Partnership
- The National Family Life & Education Center
- The South Georgia Regional Achievement Center
- The Get-Ahead House
- The Josh Gibson Youth & Family Resource Center
- The Lamar County Activity Center
- Visions Unlimited, Inc.



# Strategic Framework

We are currently engaged in several community and faith-based collaborative initiatives, having the overall objective of eradicating all forms of youth violence. In carrying-out these initiatives, we have adopted the evidence-based strategic framework developed and implemented by the Office of Juvenile Justice & Delinquency Prevention (OJJDP). The stated objectives are:

1. Community Mobilization;
2. Social Intervention;
3. Provision of Opportunities;
4. Organizational Change and Development;
5. Suppression [of unlawful activities].

Moreover, it is our most fundamental belief that in order to be effective, prevention and intervention strategies must generally be *Community Specific, Culturally Relevant, Evidence-Based, and Collaborative*.

Thank you for all you do!

Sincerely,

*Jack Johnson*

Executive Director  
The Advocacy Foundation, Inc.

# Advantages of the Multi-Disciplinary Approach

- The program infrastructure is designed to be multi-disciplinary because of the multiple and complex risk factors for juvenile delinquency
- Providers share expertise, communicate about risk behaviors and problem-solve around resistant behaviors and barriers such as lack of parental involvement
- Youth development programs with long-term effectiveness tend to address multiple behaviors
- Multi-disciplinary programs attract interns and field training programs because the approach of varied professionals participating in treatment heightens the learning experience for students

# Coordinated and Integrated Services – Central Location

- BRY-AMA will address the problem of fragmentation of existing services by:
  - developing linkages between existing service providers
  - Identifying a central point of program entry
  - Developing network policies & procedures
  - Developing client tracking mechanisms

# Centralized Services

- Afterschool Program
  - Academic skills enhancement
  - Mental Health therapy & Psycho-Educational Assessment
- Rites of Passage Program
- Substance Abuse Prevention & Treatment Groups
- Family Case Management
- Sports & Recreation
- Youth Workforce Development
- Mentoring
- Coordination w/ the Juvenile Justice System
- Coordination w/ DFCS

# Afterschool Program

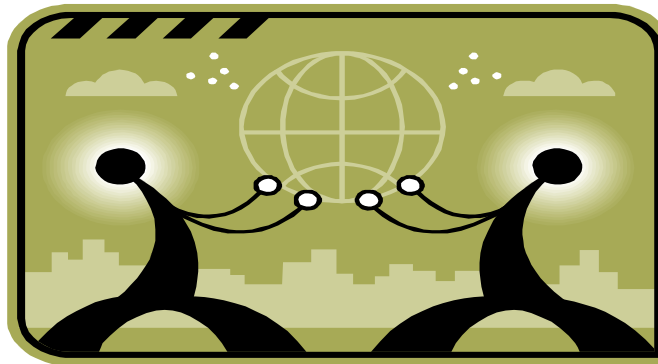
Monday through Thursday  
From 3:00pm to 6:30pm

- Academic Skills Enhancement, Tutoring & Homework Assistance
  - Remedial Reading, Writing & Math
- Sports & Recreation
- Ten-Step Rites of Passage (NFLEC)
- Skill-Building Workshops
- Anger Management/ Conflict Resolution
- Substance Abuse, Prevention, & Intervention
- Arts & Music
- Mental Health Counseling & Psycho-Educational Screening
- Family Case Management

# The Rites of Passage

Students are led through ten steps,  
including the following Rites of Passage:

Personal; Emotional; Mental; Spiritual;  
Social; Political; Economic; Historical;  
Cultural; and Physical.



# Mental Health Counseling

- Students will receive mental health counseling from county or community-based mental health workers;
- If this option is not available, psychology interns will provide services;
- Counselors will determine the modality of the intervention unless specified otherwise by court order;
- Counseling will build coping skills, self-esteem, and social competence;
- Counseling will also address violent, aggressive behaviors and substance abuse.

# Family Case Management

- Family Case Managers will coordinate network services for clients;
- Case Managers assess youth & family needs, develop Case Plans with youth & family goals and objectives to reduce risk factors and increase protective factors;
- The Case Plan will include all the services to be provided within the network and any services needed outside the network;
- The Case Plan is assessed and updated quarterly;
- Case Managers coordinate efforts with other service providers by communicating and sharing information;
- The Case Managers maintain regular contact with service providers to ensure that services are being utilized, and to monitor quality of services;
- Case Managers attend monthly Provider Case Conferences to coordinate Case Management efforts with other providers;
- Case Management will be provided by Site staff of Social Work interns.

# Family Involvement Trips

- Parents will receive Rites of Passage “Workshops for Parents” during Family Fun Weekend trips;
- Two trips will be offered per year to promote parent-youth bonding, increase positive and supportive communications with youth, and increase family rules and structure;
- Youth and parents will select and plan the weekend trips with staff;
- This strategy is highly effective in increasing parent participation.

# **Sports and Recreation**

Through the WAVE program (War Against Violence Everywhere) our youth will be offered:

- Basketball Tournaments;
- Music; and
- Art Projects

Awards will be given to participant winners, as well as continuing educational incentives for young persons who decide to pursue their disciplines beyond high school.

# Workforce Development

- All participants will receive training in;
  - Resume writing;
  - Interviewing;
  - “Dressing for Success”;
  - Assistance in Job & Internship search and placement

# Mentorship

- All participants will receive monthly Group Mentoring:
  - Interaction with supportive, positive role models.

Community volunteers will mentor, support, and counsel youth on:

- positive life decisions;
- Future career goals; and
- Personal & family responsibility.

# Project Outcomes

1. 75% of our students will be placed in either jobs, internships, or Community Service Projects;
2. There will be an 85% reduction in aggressive behavior for the students involved in this project (as evidenced by school and/or Police data);
3. 85% of the young people involved in this project will no longer be at-risk of becoming involved in gang activity;
4. 85% of the young persons involved in this project will either greatly reduce or eliminate their use of alcohol and/or drugs;
5. School attendance and performance (i.e. grades) will improve for 85% of our program participants;
6. 85% of the parents of our program participants will increase and improve both the time and the activities (i.e. quality time) spent together outside the program;
7. 85% of our participants will receive Workforce Development training, including resume writing, interviewing techniques, and job search assistance;
8. 85% of our participants will become involved in extra-curricular activities such as sports, music, art, and career development;
9. 85% of our participants will realize dramatically increased and improved levels self-esteem (as evidenced by professional evaluation);
10. 85% of our participants will become "problem solvers" and realize dramatically improved peer interaction.

# Additional Facts

- The OJJDP website suggests that a comprehensive Afterschool program in Chicago (BUILD) shows promising results with 10-17 year old offenders;
- CASA Start, a Wrap-Around Afterschool program was rated effective with 8-13 year olds in rural cities;
- The design of the BRY-AMA program facilitates the gathering of data on performance measures because services and case files are centrally located, and youth are present Monday through Thursday for 3.5 hours, during times of the day when most juvenile offenses occur nationwide.